

The logo for 'high energy mommy' is centered at the top of the page. It features the text 'high energy mommy' in a black, cursive font. The text is set against a light blue rounded rectangular background. Behind the text is a pink circle with a dotted border, which is itself surrounded by a larger, fainter dotted circle. The entire logo is set against a background of colorful polka dots in shades of red, yellow, blue, green, and purple.

high energy mommy

Thank you for downloading this Turtle Shell Costume Craft printable from highenergymommy.com!

I hope you have so much fun with it! Share photos of your little one in costume on Instagram with hashtag [#turtleshellgear](https://www.instagram.com/explore/tags/turtleshellgear)

terms of use

Just a couple of things...I'd love for you to share this printable but please share only by linking to the post that it was found on and NOT to the pdf directly.

What you **MAY** do with this printable:

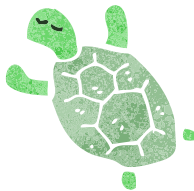
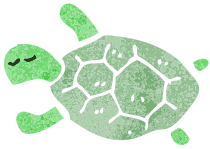
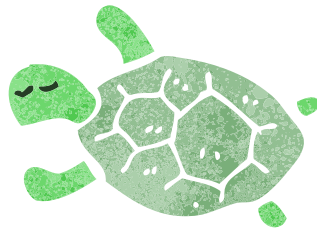
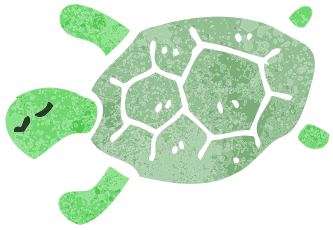
- download this file by visiting highenergymommy.com
- save this file to your computer and print as many copies as you'd like for your own personal use with your family, classroom or public library
- use this printable for your own personal non-commercial use only
- share a link to the blog post where the printable can be found

What you **MAY NOT** do with this printable:

- link directly to the pdf on your own website or social media site. **Instead**, link to this original blog post where the file was found
- redistribute, sell, or in any way profit from this file.
- print out the file and sell the printed copy.
- alter this file and/or claim it as your own.
- distribute this file to any other website or location where other's are able to electronically retrieve it (for example: Dropbox, Facebook Groups and Forums, etc...)

If you enjoyed this printable, please [subscribe HERE](#) via email or follow me on [Pinterest](#) or [Facebook](#)! Also check out the links to other great printables and resources in my Fun School activity [posts HERE](#)!

Turtle Shell Costume Craft



Materials you will need:

- pencil
- *sharp scissors*
- Elmer's School Glue
- **single hole punch** (if available, if not the scissors will work fine)
- **1** - 12 x 18 inch thin craft foam sheet (any color you choose, this will be for the shell body). You can buy this at your local craft store in individual sheets. Or Amazon sells variety packs in solid and glitter colors ([like these](#)) which are usually cheaper than purchasing separately.
- **1 or 2** - 9 x 12 thin foam sheets (any color(s) you choose, this will be for the details on the shell so get creative). You can also buy these individually at your craft store or through Amazon.
- **Thin ribbon** (use a soft fabric ribbon so it's comfortable on your kiddo's skin and is easy to tie and untie)

Instructions:

Step 1: Cut out the outline of the turtle shell on page 3 (attached).

Step 2: Trace **TWO** shell outlines onto the 12 x 18 piece of foam, lengthwise so they fit side by side. One will be the front shell and the other the back shell. (I use a pencil to trace on foam to hide the lines better if I mess up).

Step 3: Using sharp scissors, cut each shell out of the foam. I recommend sharp scissors because it's much easier to cut foam.

Step 4: Next, cut out each of the individual shapes from the template and trace them onto the 9 x 12 foam sheet(s). It's easier to lay them out on the foam sheets, kind of like a puzzle, as you go, to keep track of how they fit together.

Step 5: Cut out each of the shapes from the foam and glue them to one of the shells from step 3 (this will be the shell that goes on your child's back).

Step 6: Also, cut a small triangular "tail" out of a piece of the scrap foam and glue it to the bottom of the back shell.

Step 7: While the glue is drying, use the ribbon to measure from your child's chest up over their shoulder and down to the bottom of their shoulder blade. Multiply that length by 3 and cut as applicable. Repeat for the other side. (I suggest using more ribbon than less since it can always be cut if it's too long). This ribbon will be the straps to attach the front and back of the shell. Also measure around your child's waist and cut a ribbon that length, then cut it in half (you will use this ribbon to tie the sides of the shell).

Step 8: After the glue is dry, hold the back shell up to your child's back and mark where the straps should be at the top and on the sides. The straps should sit over their mid shoulder (like a tank-top shirt) and the side straps should be at their waist. Punch one hole at each marking where the ribbon straps will go. Repeat for the front shell.

Step 9: Feed the top strap ribbon through each hole in the top of each shell and carefully put it on your child over their head. Tie the ribbon to secure it as tight or loose as needed. Then feed the side ribbon through the side holes, tie, and they're all set!

Your kiddo will love wearing their #turtleshellgear

